



Daily Completion Report
 Well ID: 55-29
 Field: Newberry

Alta Rock Energy Inc.
 Well Name: Newberry 55-29

Report No: 40 **Report For 09:00 AM November 5, 2012**

Project Manager: Michael Moore	Cost Incurred to Date: \$4,482,478.92	State: OR
Measured Depth (ft.): 10,060	Field Tickets:	County: Deschutes
Vertical Depth (ft.):		Field: Newberry
Plug Back MD:		
Plug Back TVD:		

Current Operations: Running stim pump 1 to maintain pressure until stim pump 2 is repaired

Prior Operations: Running stim pump 1 to maintain pressure until stim pump 2 is repaired

Planned Operations: Repair stim pump 2; continue to stimulate zone 1

Well site Supervisors: Ted DeRocher Michael Moore **Tel No.:** 775-830-7406 541-410-1795

Operations Summary for Nov. 4th

From	To	Elapsed	Code	Operations Description
0:00	11:20	11.33	134.000	INJ Stim pump 1 running at 57 Hz overnight. Maximum wellhead pressure reached 1008 psi. Ultrasonic flow meter down. Bypass 38% open.
11:20	18:08	6.80	134.000	INJ Reducing stim pump 1 speed slowly to 50.1 Hz. WHP reached 778 psi. Bypass 45% open.
18:08	0:00	5.87	134.000	INJ Pumping at 50.1 Hz and 778 psi overnight. Weirbox measurement=6.9", equivalent flow=281 gpm.

Issued PO's

VENDOR	AMOUNT	DESCRIPTION

Activity Comments

Decreased Stim Pump 1 to 50.1 Hz to achieve a WHP of 778 psi; will hold steady until Stim Pump 2 repaired and micro seismic event depths are better understood.

Max. well head pressure reached today: 1013 psi (778 psi at end of day)
 Max. flow through pumps before bypass: 773 gpm
 Max. flow down hole: 71 gpm (measurements from ultrasonic meter are being reviewed)

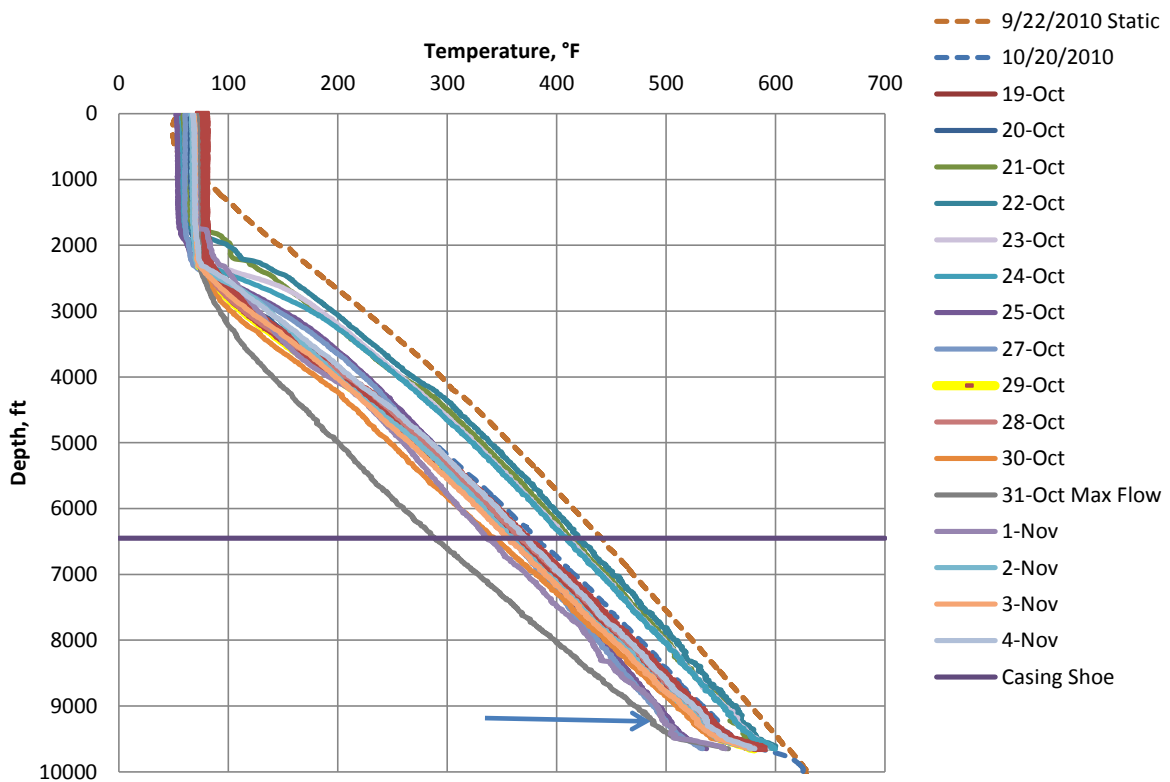
Volume pumped down hole today: 95,621 gpm (assumed from 0.07 gpm/psi injectivity)

Total injected volume: 1,444,312 gallons

DTS traces shown on next page with potential zones of fluid loss marked.

Entered: 11/05/2012

DTS data



DTS data (zoomed)

